

ALL IDEAS, DESIGNS, ARRANGEMENTS AND PLANS INDICATED OR REPRESENTED BY THIS DRAWING WERE CREATED SOLELY FOR USE ON AND IN CONNECTION WITH SPECIFIED PROJECT AND SHALL REMAIN THE PROPERTY OF THE STICKNEY DESIGN ASSOCIATES. NONE OF THESE IDEAS, DESIGNS, ARRANGEMENTS OR PLANS SHALL BE USED BY OR DISCLOSED TO ANY PERSON, FIRM OR CORPORATION FOR ANY PURPOSE WITHOUT THE EXPRESS WRITTEN APPROVAL OF STICKNEY DESIGN ASSOCIATES.

BUILDING NEXT DOOR

LANDSCAPE LEGEND

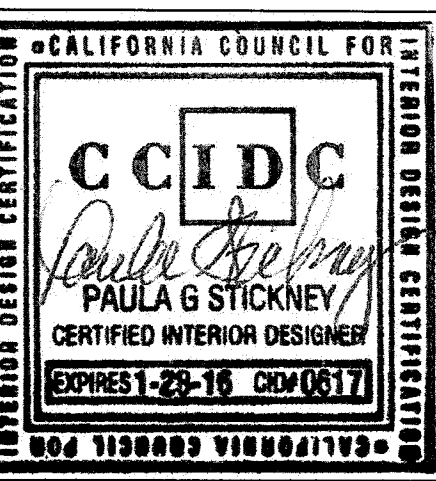
- EXISTING SHELL CONSTRUCTION, TO REMAIN.
- EXISTING 3'-0" X 1'-0" DOOR W/ LEVER HARMARE
- EXISTING 6" CONCRETE CURB TO REMAIN
- NEW 6" CONCRETE CURB TO ALIGN W/ EXISTING
- NEW 8" X 8" X 16" CMU BLOCK RETAINING WALL, 4'-6" H. SEE DETAIL X/AS.0
- NEW CONCRETE WALKWAY
- NEW ASPHALT PARKING SURFACE

STORM WATER QUALITY NOTES

CONSTRUCTION BMP'S
THIS PROJECT SHALL COMPLY WITH ALL REQUIREMENTS OF THE STATE PERMIT, CALIFORNIA REGIONAL WATER QUALITY CONTROL BOARD, SAN DIEGO REGIONAL ORDER NO. 2020-01, NPDES NO. CAS000015

NOTES BELOW INDICATE KEY MINIMAL REQUIREMENTS FOR CONSTRUCTION BMP'S

- SUFFICIENT BMP'S MUST BE INSTALLED TO PREVENT SILT, MUD, AND/OR OTHER CONSTRUCTION DEBRIS FROM BEING TRACKED INTO THE ADJACENT STREET(S) OR STORM WATER CONVEYANCE SYSTEMS DUE TO CONSTRUCTION VEHICLES OR ANY OTHER CONSTRUCTION ACTIVITY. THE CONTRACTOR SHALL BE RESPONSIBLE FOR CLEANING ANY SUCH DEBRIS THAT MAY BE IN THE STREET AT THE END OF EACH WORK DAY OR AFTER A STORM EVENT THAT CAUSES A BREACH IN THE INSTALLED CONSTRUCTION BMP'S.
- ALL STOCK PILES OF UNCOMPACTED SOIL, AND/OR BUILDING MATERIALS THAT ARE INTENDED TO BE LEFT UNPROTECTED FOR A PERIOD GREATER THAN SEVEN CALENDAR DAYS ARE TO BE PROVIDED WITH EROSION AND SEDIMENT CONTROLS. SUCH SOIL MUST BE PROTECTED EACH DAY WHEN THE PROBABILITY OF RAIN IS 40% OR GREATER.
- A CONCRETE WASHOUT SHALL BE PROVIDED ON ALL PROJECTS WHICH PROPOSE THE CONSTRUCTION OF ANY CONCRETE IMPROVEMENTS THAT ARE TO BE POURED IN PLACE ON THE SITE.
- THE EROSION/SEDIMENT CONTROL DEVICES SHALL BE MAINTAINED IN WORKING ORDER AT ALL TIMES.
- ALL SLOPES THAT ARE CREATED OR DISTURBED BY CONSTRUCTION ACTIVITY MUST BE PROTECTED AGAINST EROSION AND SEDIMENT TRANSPORT AT ALL TIMES.
- THE STORAGE OF ALL CONSTRUCTION MATERIALS AND EQUIPMENT MUST BE PROTECTED AGAINST ANY POTENTIAL RELEASE OF POLLUTANTS INTO THE ENVIRONMENT.
- THE CONTRACTOR SHALL BE RESPONSIBLE FOR CLEANUP OF ALL SILT AND MUD ON ADJACENT STREETS DUE TO THE CONSTRUCTION VEHICLES OR ANY OTHER CONSTRUCTION ACTIVITY, AT THE END OF EACH WORKDAY, OR AFTER A STORM EVENT THAT CAUSES A BREACH IN INSTALLED CONSTRUCTION BMP'S, WHICH MAY COMPROMISE WATER QUALITY WITHIN ANY STREET. A STABILIZED CONSTRUCTION EXIT MAY BE REQUIRED TO PREVENT CONSTRUCTION VEHICLES OR EQUIPMENT FROM TRACKING MUD OR SILT INTO THE STREET.
- ALL STOCKPILES OF SOIL, AND/OR BUILDING MATERIALS THAT ARE INTENDED TO BE LEFT FOR A PERIOD GREATER THAN SEVEN CALENDAR DAYS ARE TO BE COVERED. ALL REMOVABLE BMP DEVICES SHALL BE IN PLACE AT THE END OF EACH WORKING DAY WHEN THE FIVE-DAY RAIN PROBABILITY FORECAST EXCEEDS 40%.
- A CONCRETE WASHOUT SHALL BE PROVIDED ON ALL PROJECTS WHICH PROPOSE THE CONSTRUCTION OF ANY CONCRETE IMPROVEMENTS THAT ARE TO BE POURED IN PLACE ON SITE.
- THE CONTRACTOR SHALL RESTORE ALL EROSION/SEDIMENT CONTROL DEVICES TO WORKING ORDER AFTER EACH RUN-OFF PRODUCING RAINFALL OR AFTER ANY MATERIAL BREACHES ITS EFFECTIVENESS.
- ALL SLOPES THAT ARE CREATED OR DISTURBED BY CONSTRUCTION ACTIVITY MUST BE PROTECTED AGAINST EROSION AND SEDIMENT TRANSPORT AT ALL TIMES.
- THE STORAGE OF ALL CONSTRUCTION MATERIAL AND EQUIPMENT MUST BE PROTECTED AGAINST ANY POTENTIAL RELEASE OF POLLUTANTS INTO THE ENVIRONMENT.



REVISION	DATE
BLDG DEPT SUBMIT	2-20-14
REVISION	5-21-14
REVISION	6-08-14
REVISION	8-05-14

STICKNEY
DESIGN
ASSOCIATES

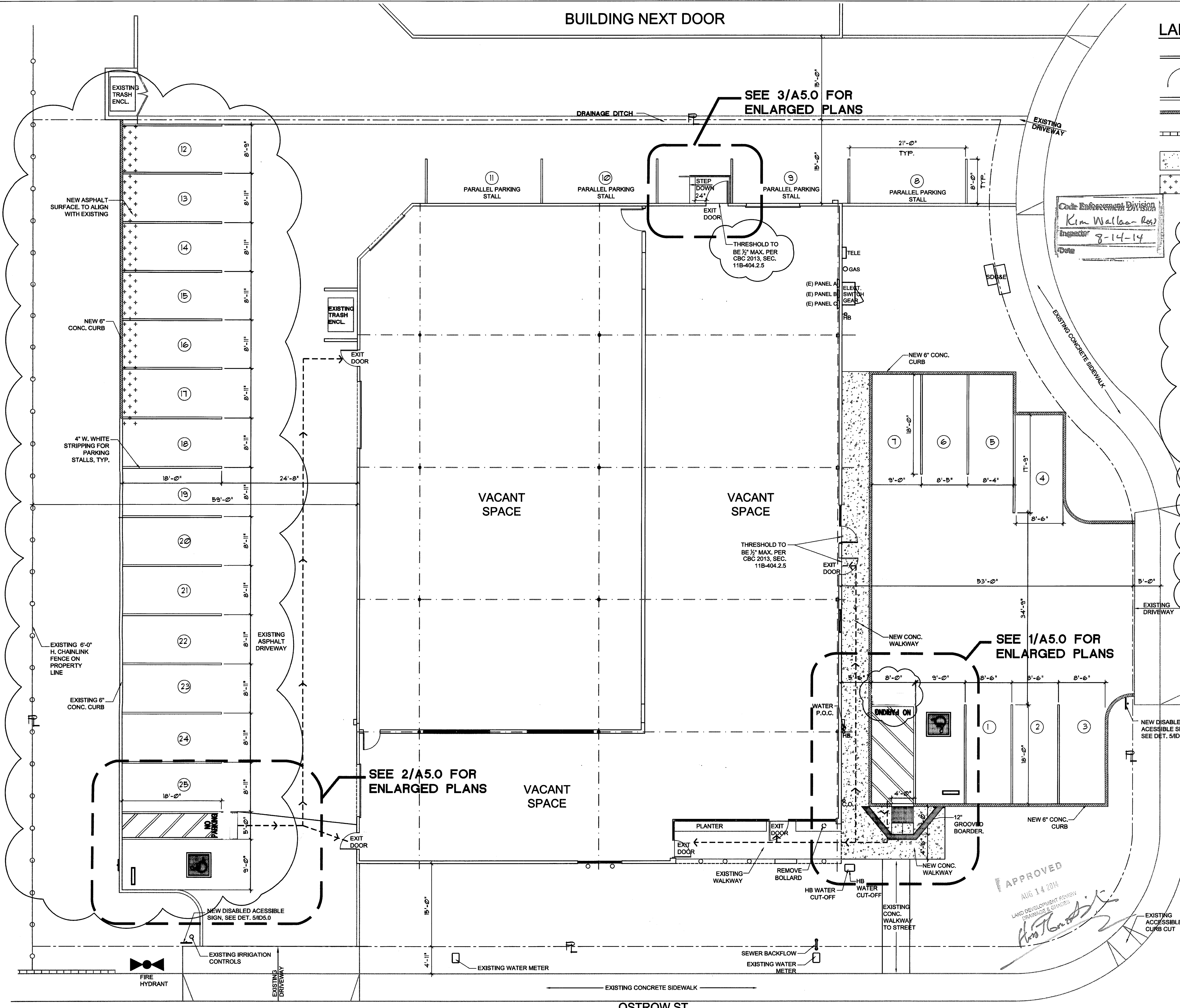
9606 WAYFARER DR.
TELE: 619.743.2870 FAX: 619.312.1907
CCID CERTIFICATION NO. # 0617

KEARNY MESA BUILDING
EXTERIOR IMPROVEMENTS

7818 WILKERSON CT.
SAN DIEGO, CALIFORNIA 92111

DATE:	02/18/2014
DRAWN BY:	FGS
SCALE:	1/8"=1'-0"
JOB NO:	7818WC
DRAWING NAME:	A3.0-SITE-NW
SHEET NO:	

A3.0



EXEMPT
DEVELOPMENT SERVICES
DEPARTMENT
Land Development Review

PTS No. 359920

From Landscape 142,0402

Permit Type Municipal Code Section

By Kelly Church Initials

Date 8-7-14 Phone 446-5343

Any revision to these plans will revoke this exemption
S.D. from 2-20-14

City of San Diego
APPROVAL Date 8-27-14
By Amanda Sheppard
Sealing 10-1-14

PTS # 359920
BUILDING DEVELOPMENT REVIEW
DIVISION-STRUCTURAL
Not in Record Plain
APPROVAL
Paula Map No.
60073C1608C

NEW
SITE PLAN
NORTH