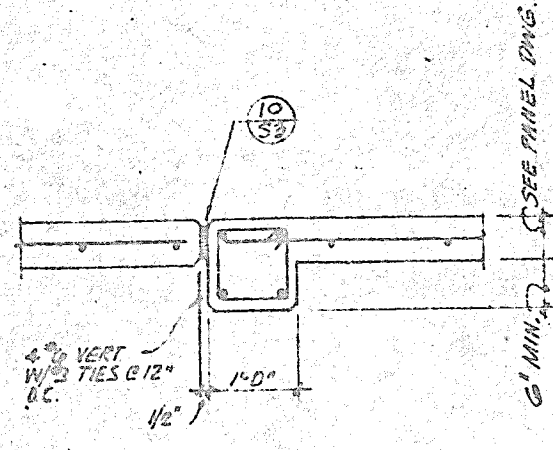
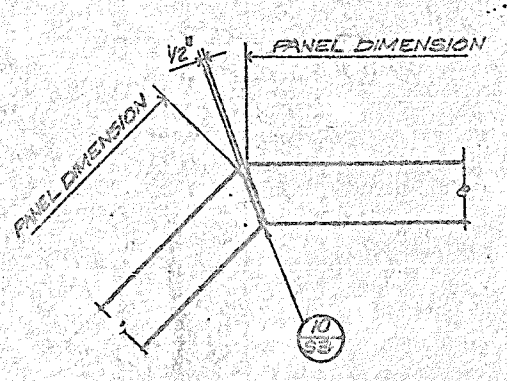


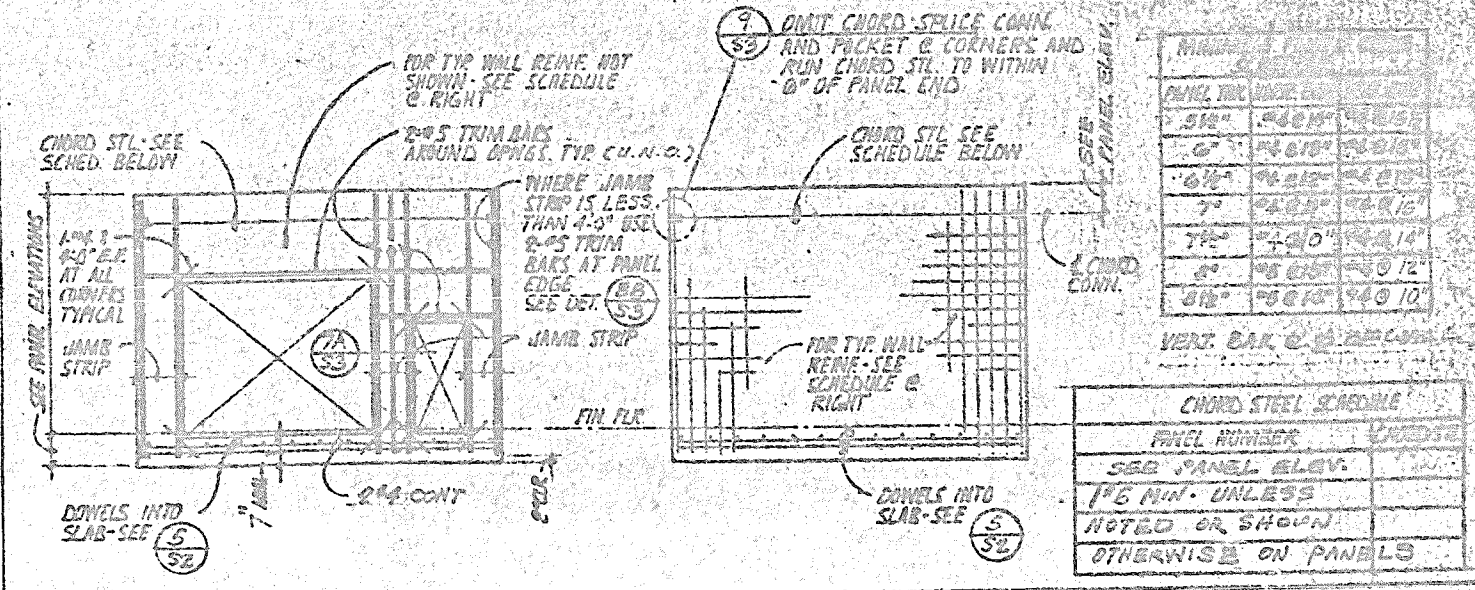
TYP. RECESS AT PANEL



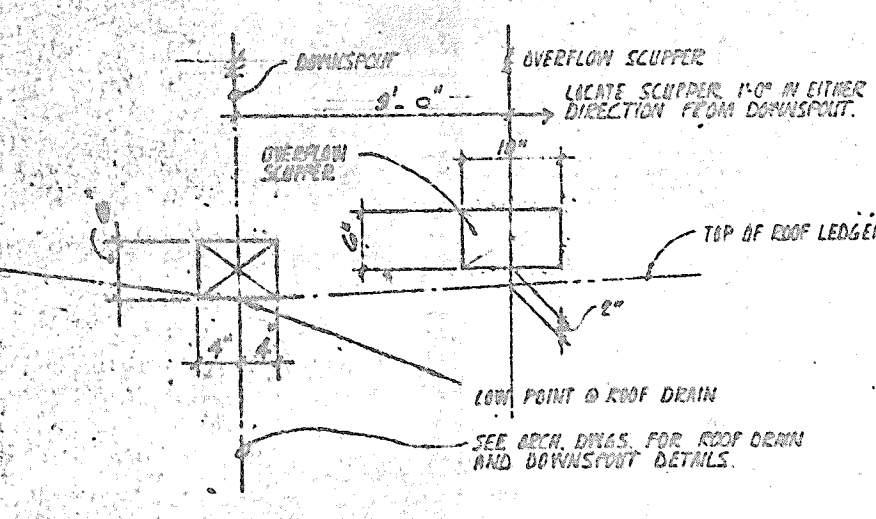
SECTION AT PILASTER



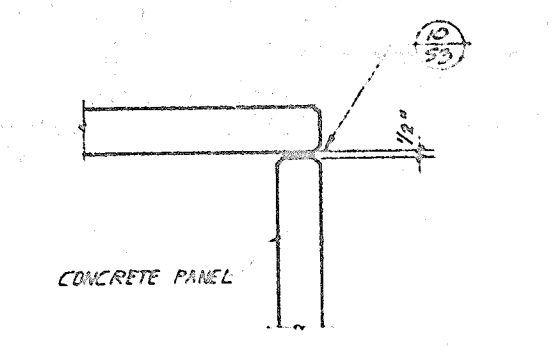
SECTION AT CORNER



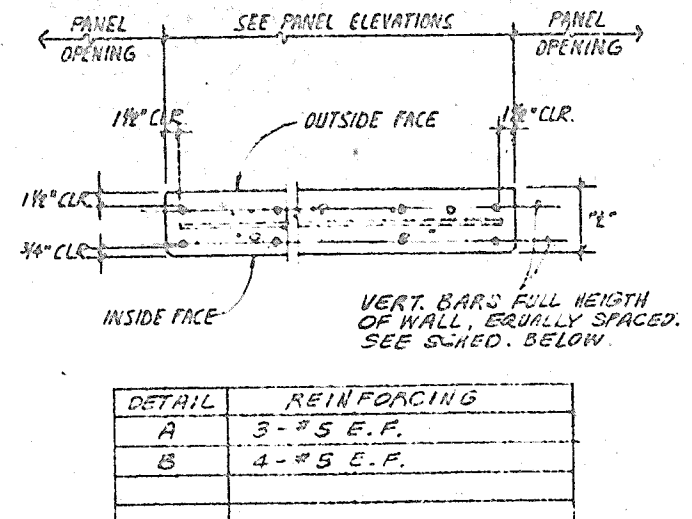
TYPICAL PANEL REINFORCEMENT



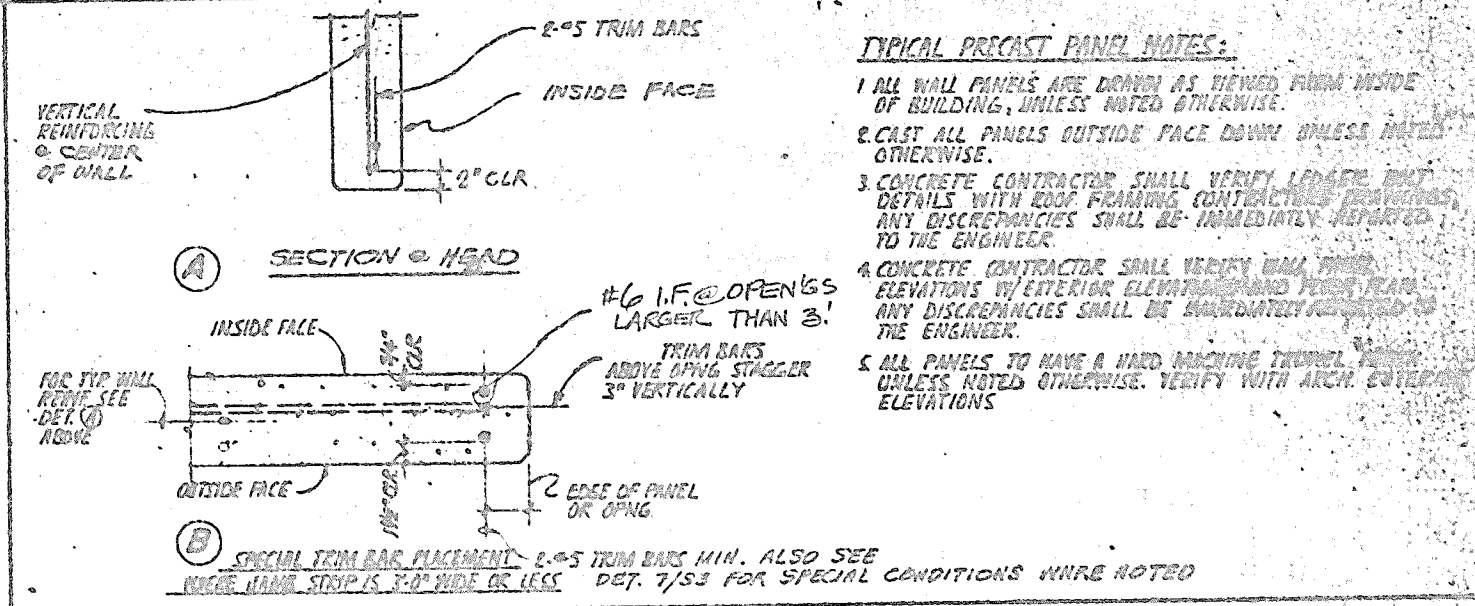
SCUPPER DETAIL



SECTION



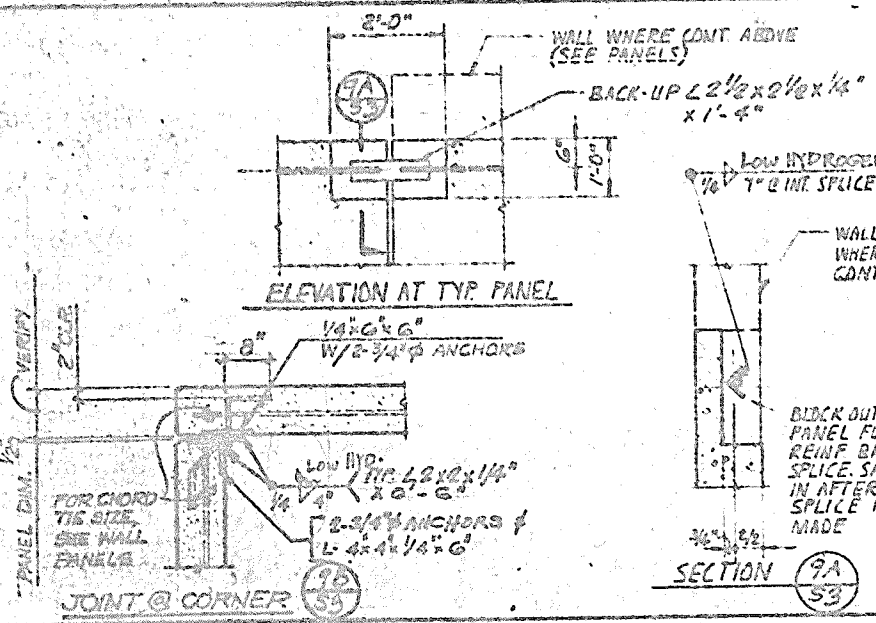
SPECIAL JAMB STRIP DETAIL



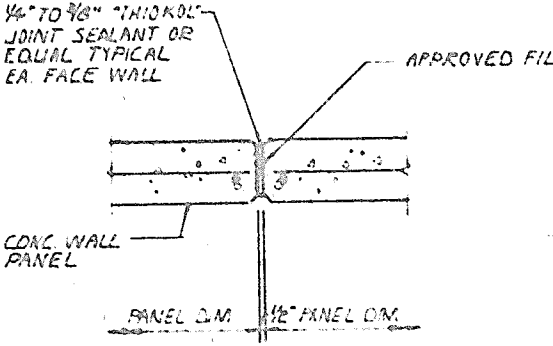
TYPICAL REINFORCING PLACEMENT

TYPICAL PRECAST PANEL NOTES:

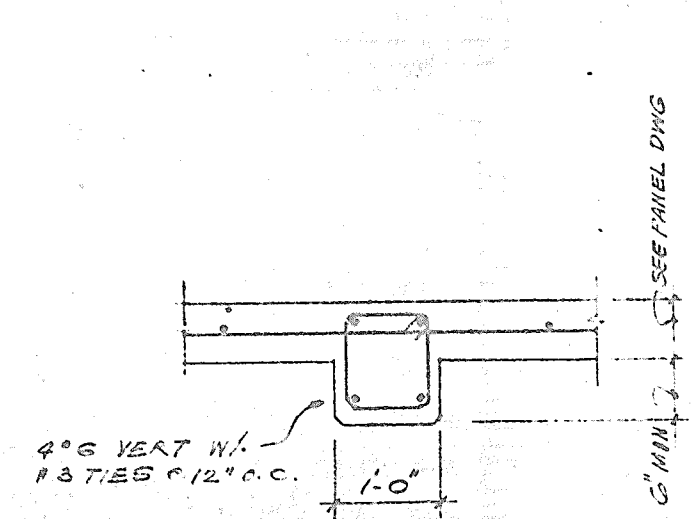
1. ALL WALL PANELS ARE DOWN AS VIEWED FROM INSIDE OF BUILDING, UNLESS NOTED OTHERWISE.
2. CAST ALL PANELS OUTSIDE FACE DOWN UNLESS NOTED OTHERWISE.
3. CONCRETE CONTRACTOR SHALL VERIFY LEADER DET. DETAILS WITH ROOF FRAMING CONTRACTOR'S DRAWINGS. ANY DISCREPANCIES SHALL BE IMMEDIATELY REPORTED TO THE ENGINEER.
4. CONCRETE CONTRACTOR SHALL VERIFY WALL PANEL ELEVATIONS W/ EXTERIOR ELEVATIONS AND FROM PLANS. ANY DISCREPANCIES SHALL BE IMMEDIATELY REPORTED TO THE ENGINEER.
5. ALL PANELS TO HAVE A HARD FINISH TRIMMED UNLESS NOTED OTHERWISE. VERIFY WITH ARCH. EXTERIOR ELEVATIONS.



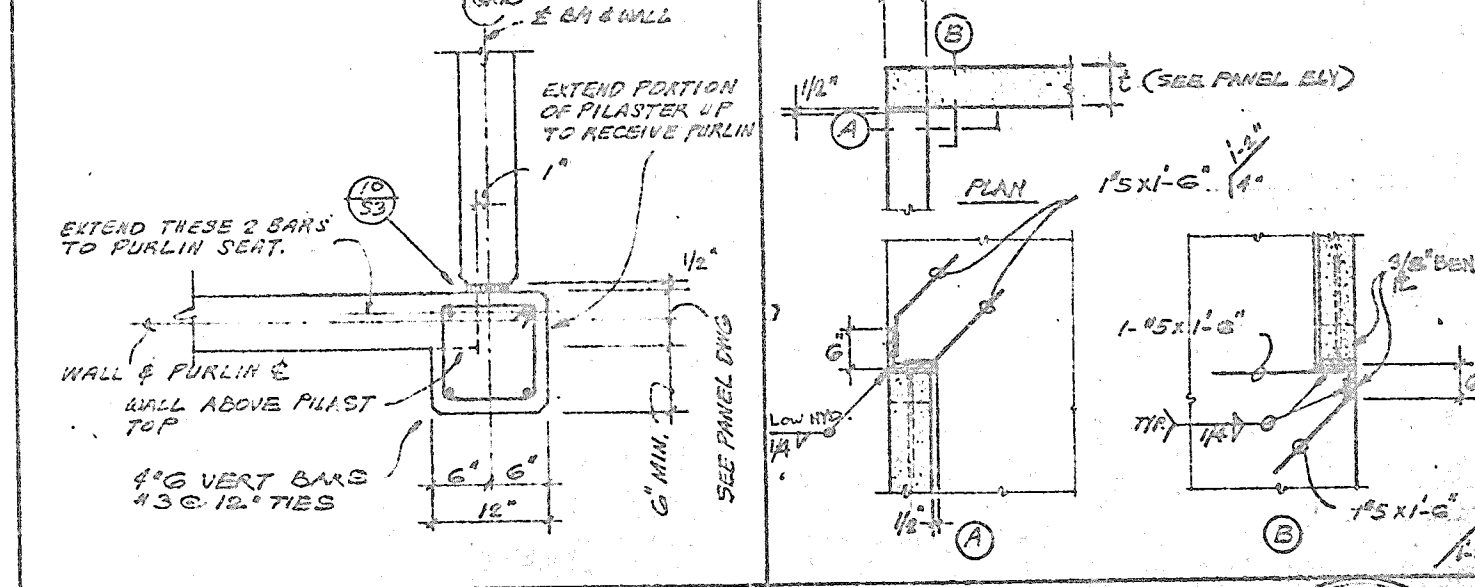
REINF. BAR SPLICE



TYPICAL JOINT

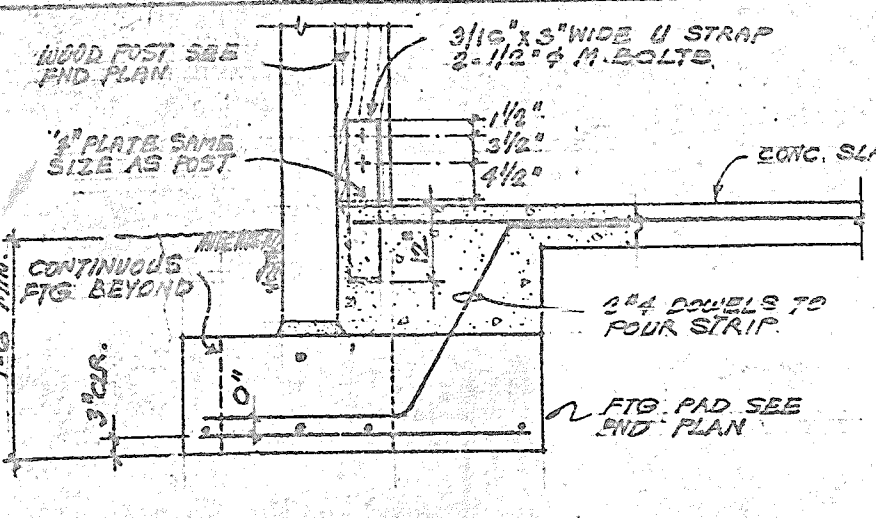


SECTION @ PILASTER

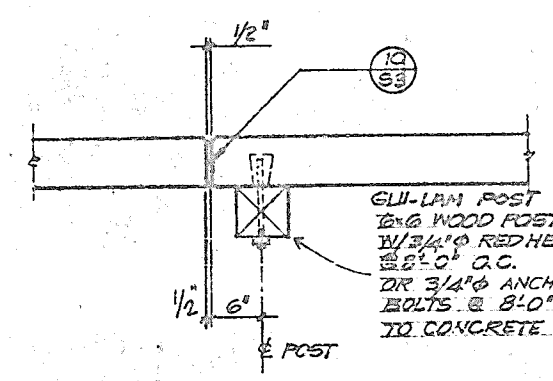


SECTION

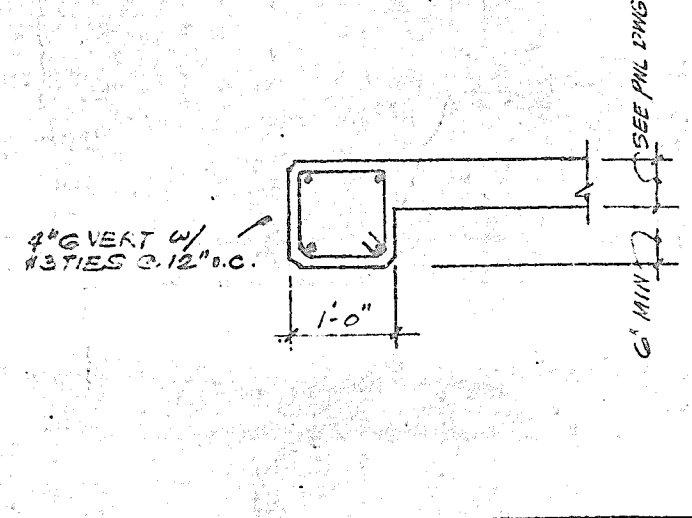
PANEL CONNECTION



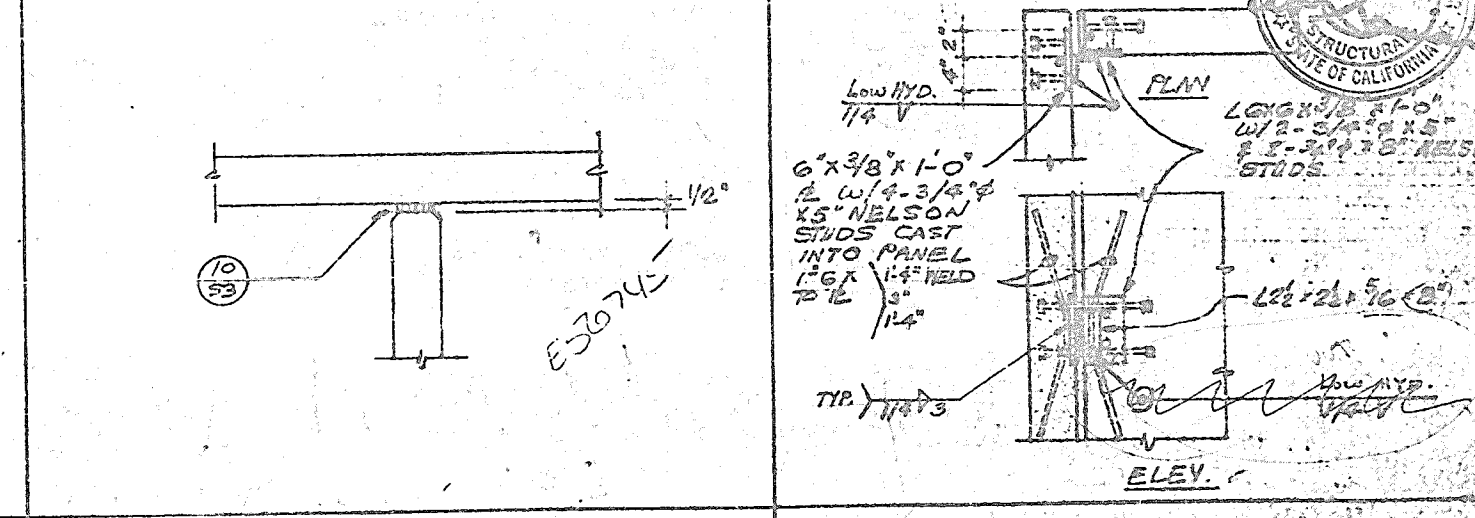
DET. @ WOOD PILASTER



SECTION @ WOOD PILASTER



SECTION



PANEL JOINT

DETAIL

KEAPNY MESA/DUNN
220 BROADVIEW DE. SANTA ANA, CALIF. 92701

KEAPNY MESA/DUNN
BUSINESS PARK SAN DIEGO, CALIF.

KEAPNY MESA/DUNN
BUSINESS PARK SAN DIEGO, CALIF.

KEAPNY MESA/DUNN
BUSINESS PARK SAN DIEGO, CALIF.

0308