

### PLUMBING SCHEDULE

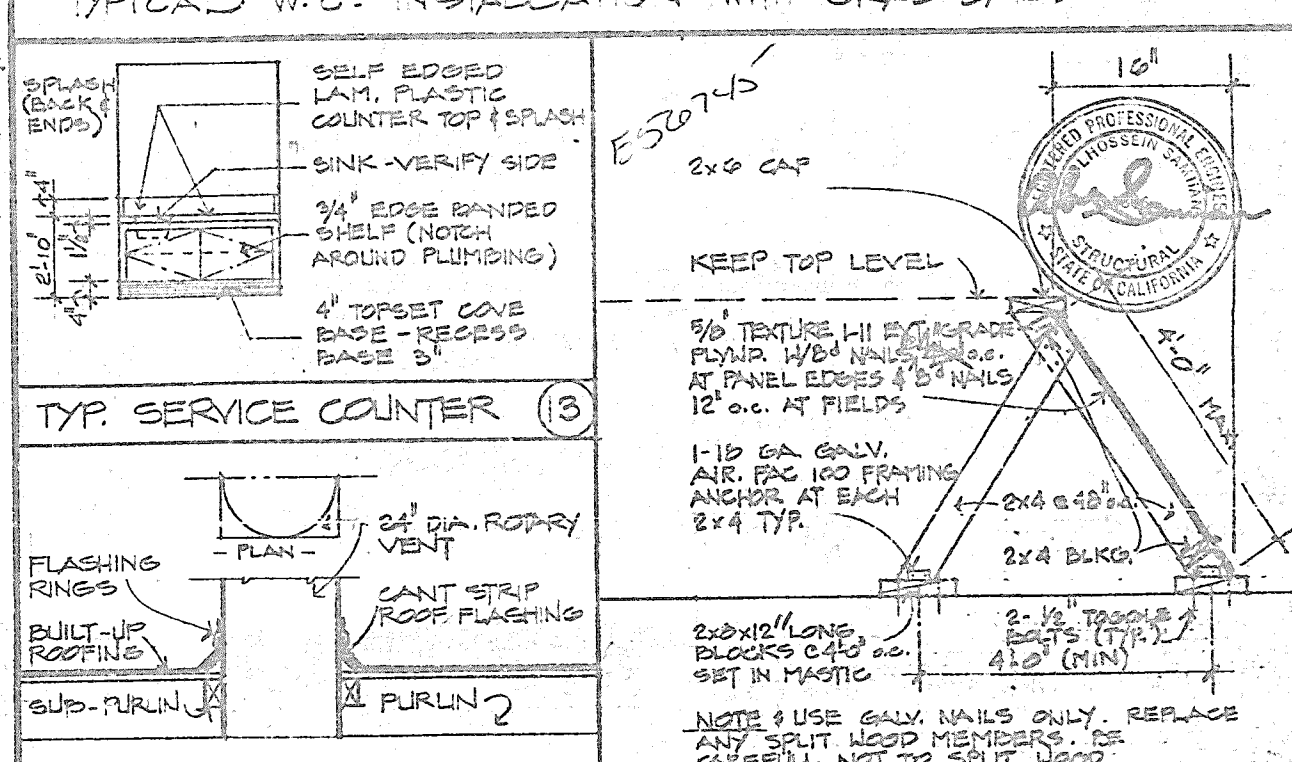
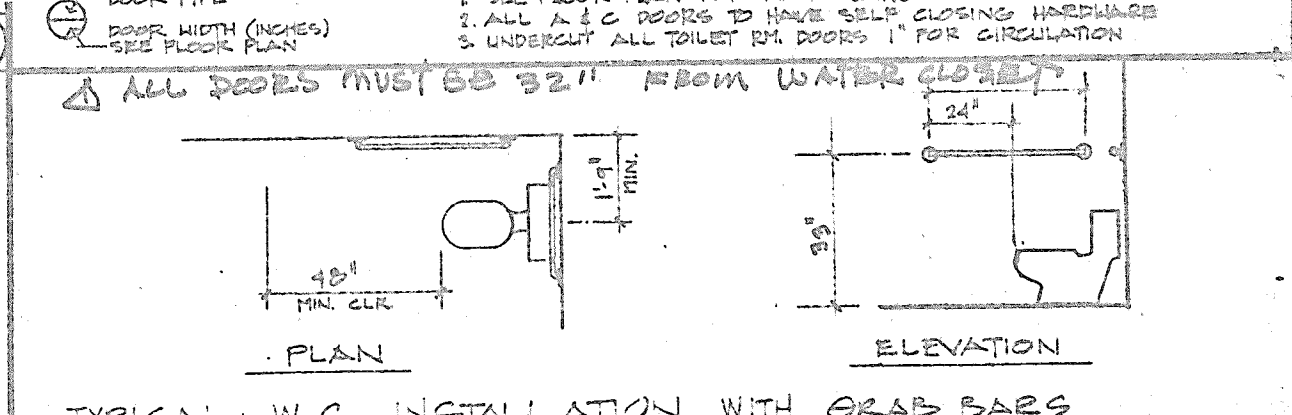
WATER VALVE	AMERICAN STANDARD (AUST) 2 1/2" O.D. - 150 LB. SEAT
WATER METER	AMERICAN STANDARD ALL-BRONZE (SER. 21)
WATER METER BOX	AMERICAN STANDARD (SER. 21)
COUNTER SINK	AMERICAN STANDARD (SER. 21)
WATER HEATER	AMERICAN STANDARD (SER. 21)

### ELECTRICAL SCHEDULE

1	2-TUBE 4-TUBE FLOOR FIX. W/ ACRYLIC LENS	RECESS IN 1" PAR. CEILING
2	2-TUBE 4-TUBE FLUORESCENT FIXTURE	CEILING SURFACE MOUNTED
3	4-TUBE 4-TUBE FLUORESCENT FIXTURE	CEILING SURFACE MOUNTED
4	PARO SP 18	CEILING MOUNTED
5	PARO BRACKET LIGHT 5-2	HALL MOUNTED 18" ABOVE DOOR
6	PARO R.T. 14	CEILING MOUNTED IN HALL
7	PARO RECESSED SQUARE 5-1-20	RECESSED SQUARE LIGHT
8	KEYLESS TELEPHONE SOCKET	SURFACE MOUNTED IN SHOP AREA
9	EXHAUST FAN (1/2" AIR CHANGE PER 15 MIN)	CEILING TO LIGHT VENT THROUGH ROOF
10	PULLEX 10V 12" HIGH AT OFFICES, 5' HIGH AT TOILETS, 25" HIGH AT SHOP AREA	
11	SINGLE SWITCH AT 48" HIGH	
12	TELEPHONE OUTLET AT 12" HIGH	

### DOOR SCHEDULE

1	UNITED STATES ALUM. ENTRY DOOR OR EQUAL W/ DURANOMIC FINISH	1 1/2" HOLLOW CORE FLUSH WOOD DOOR PAINT GRADE FRAME PER 4/12	6000 5/8" H OR EQUAL STEEL DOOR MESH FRAME PER 5/12	PROVIDE ROLL UP DOOR OR EQUAL	1 1/2" HOLLOW CORE FLUSH WOOD DOOR WITH STAND OVERHEAD ROLLING HARDWARE PAINT GRADE
---	-------------------------------------------------------------	---------------------------------------------------------------	-----------------------------------------------------	-------------------------------	-------------------------------------------------------------------------------------



PROPERTIES  
 CORPORATION  
 KEARNEY MESA/DUNN  
 BUSINESS PARK SAN DIEGO, CALIF.  
 25 BROOKHOLLOW DR., SANTA ANA, CALIF. 92705-5921

0305