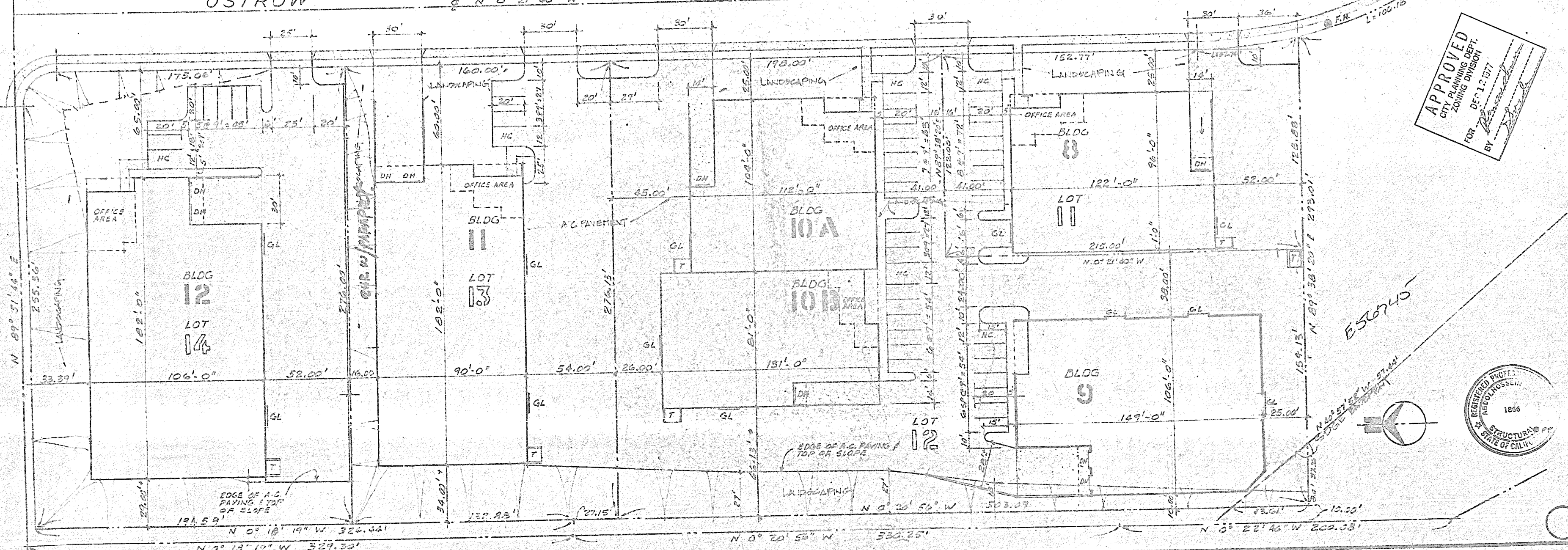
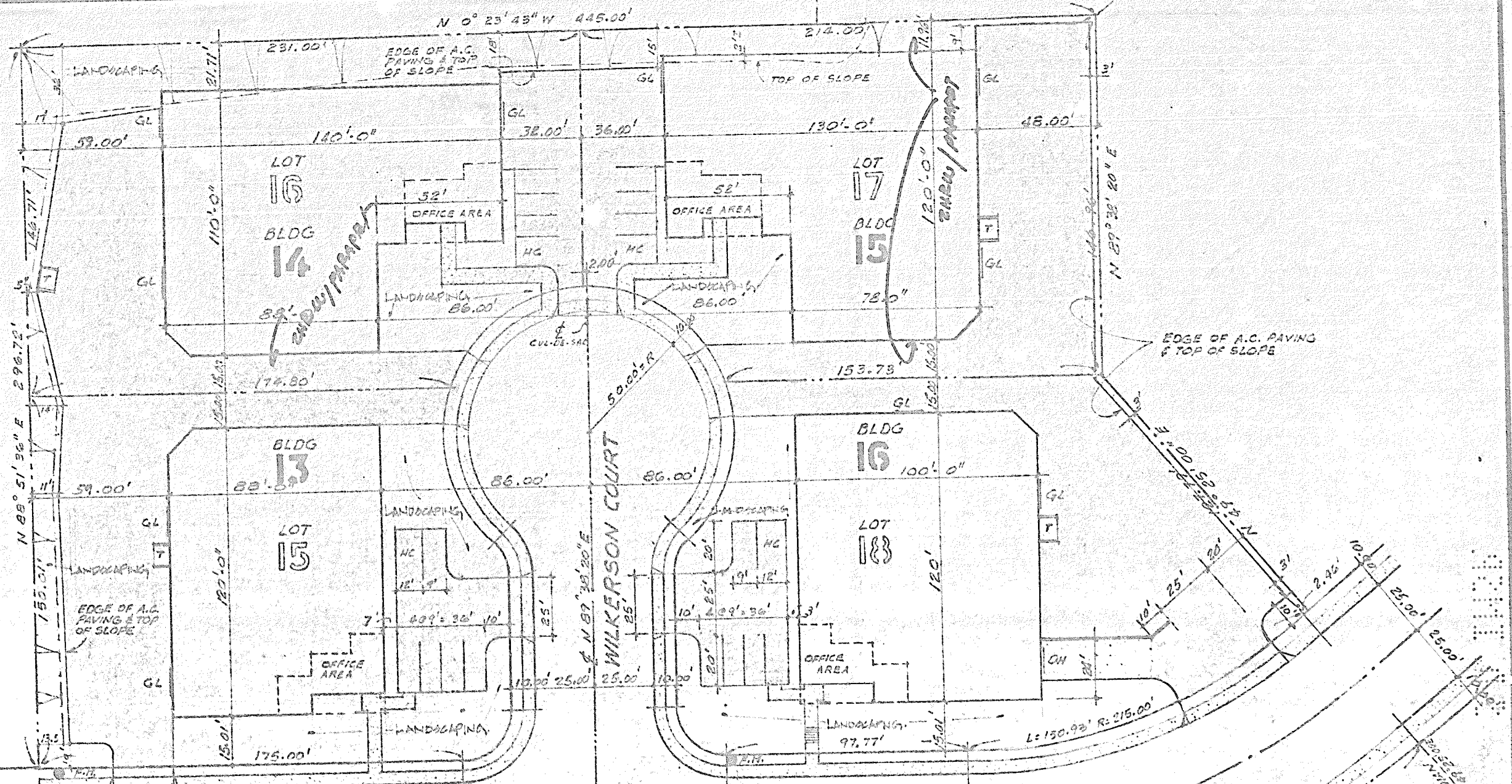


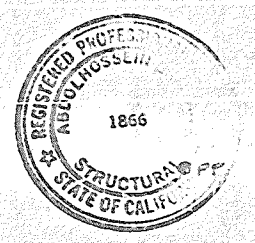
OTHELLO STREET

OSTROW STREET

STREET



APPROVED
CITY PLANNING DEPT.
ZONING DIVISION
FOR DEF. 1-1377
BY [Signature]



E-36745

PROPERTIES
CORPORATION
28 BROOKHOLLOW DR., SANTA ANA, CALIF. (714) 562-1101



KEARNY MESA/DUNN
BUSINESS PARK SAN DIEGO, CALIF.

DATE: 8-27-77
DRAWN: J.P.S.
CHECKED: J.S.O.
JOB NO.
SHEET NO. 11 OF 11

0293